

2J4C01MP

(Datasheet)

Type	GNSS antenna
Frequencies	GPS (1575.42 MHz)
Mounting	Any Surface Glass Mount Magnetic Mount Patch Mount
Revision	01




P. Tipul

1. SPECIFICATION

1.1. Electrical Specifications

Frequencies	GPS (1575.42 MHz)
Noise Figure	1.15dB
Impedance	50 Ohms
Polarization	RHCP
Ceramic patch size	13 x 13 x 4mm
Ceramic patch gain	Typical 0.0 @ zenith
LNA Gain	26dB at 3V, 27dB at 5V
VSWR	<1.2:1
Voltage supply	2.7V - 5.5V
Current	15 mA -25 mA
Power (max.)	138mW
Operating temperature	-40°C to +85°C

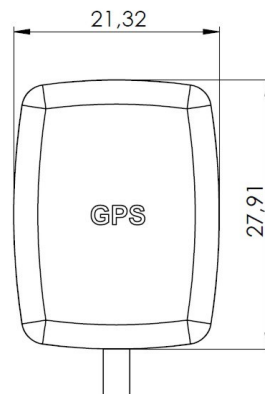
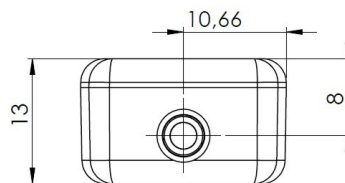
1.2. Connection Specifications

Connector type: SMA male
 Cable: RG174U
 Cable length: 15 cm
 For different cable length or connector type please ask our sales team.

1.3. Mechanical Specifications and Dimensions

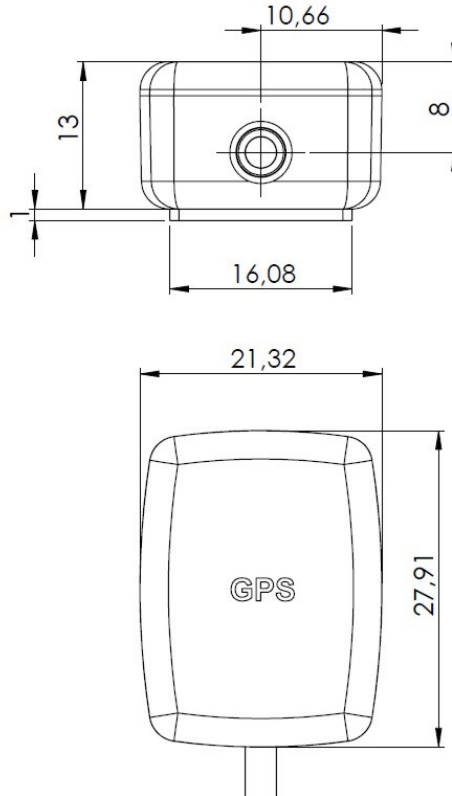
1.3.1. Magnetic mount

Material: ABS
 Max. dimensions: 13.2mm x 28.2mm x 21.2mm
 Weight: 52 g ‘counted with default connection’
 Colour: Black (for different colours please ask our sales team)



1.3.2. Patch mount

Material: ABS
 Max. dimensions: 14.2mm (with sticky pad) x 28.2mm x 21.2mm
 Weight: 52 g ‘counted with default connection’
 Colour: Black (for different colours please ask our sales team)



2. MEASUREMENT

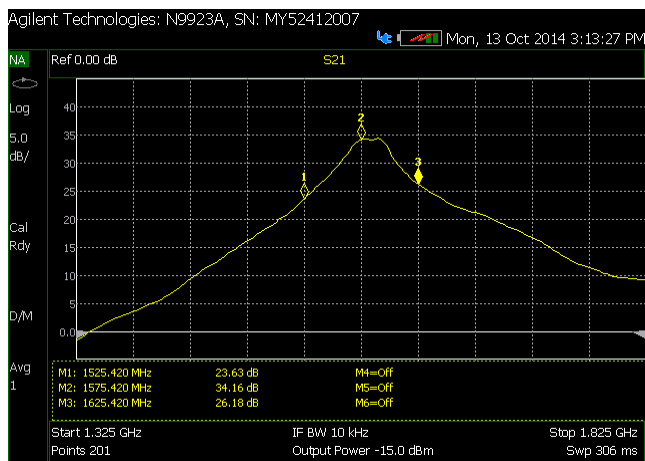


Figure 1 - Antenna gain at 3V at 0deg against ref. antenna

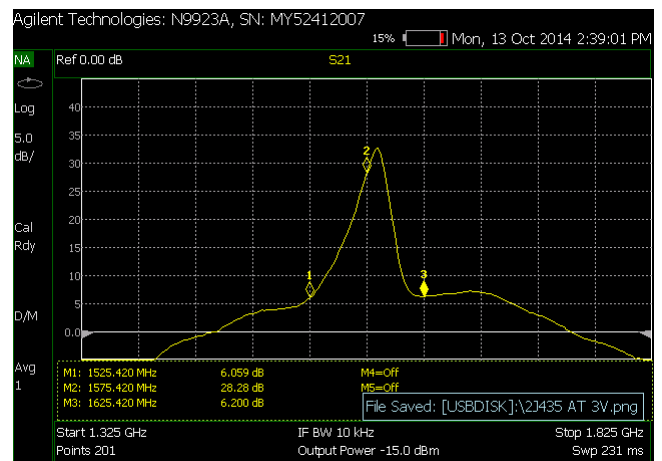


Figure 2 - Antenna gain at 3V at 90deg against ref. antenna

3. IMAGES

